

Visual Companion  
for  
Cushing's Handbook  
Cone 06-04 Glaze Recipes

This document was created in 2019 by the Grinding Room at Alfred University as a visual companion to Cushing's Handbook.

Great effort was taken to replicate the original glazes. Minor variation is expected as some of the materials listed are unspecific and other materials are no longer commercially available.

<u>Material Listed</u>	<u>Material Used</u>
Ball Clay	OM-4
Clay	EPK
Kaolin	EPK
Kona F-4	Minspar
China Clay	Grolleg

## Alkaline Matt



Cone 06



Cone 04

## Beads

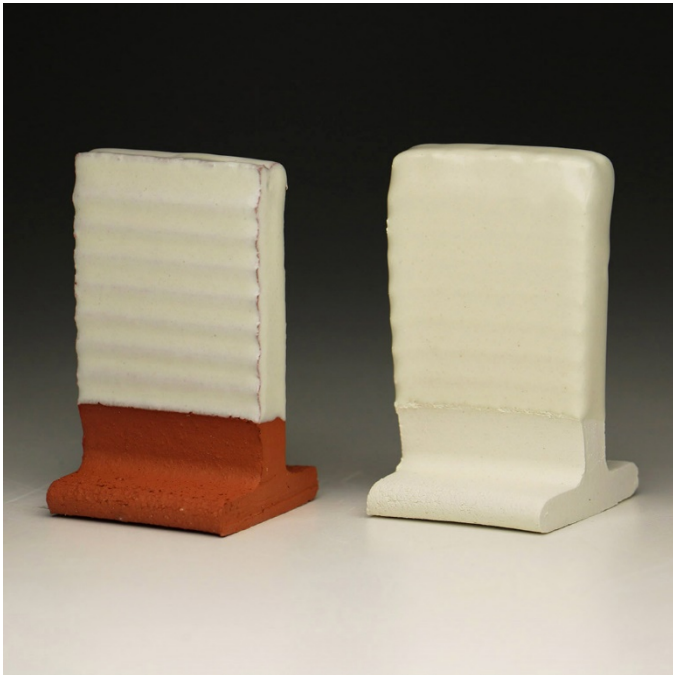


Cone 06



Cone 04

## Bill's Basic



Cone 06



Cone 04

## Erickson's Peeling Paint



Cone 06



Cone 04



## George's Gold Glaze



Cone 06



Cone 04

## Glossy Clear 3



Cone 06



Cone 04

## John Gill Blue Glaze

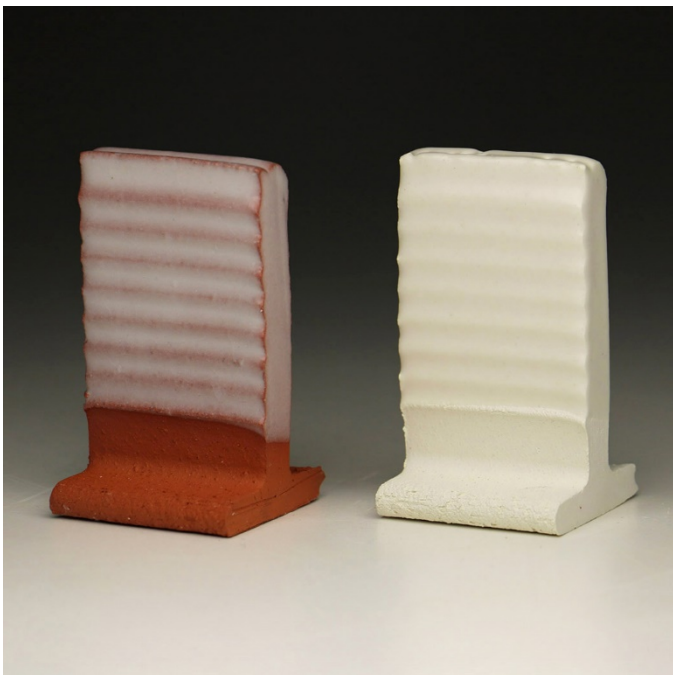


Cone 06



Cone 04

## Johnson Satin Matt



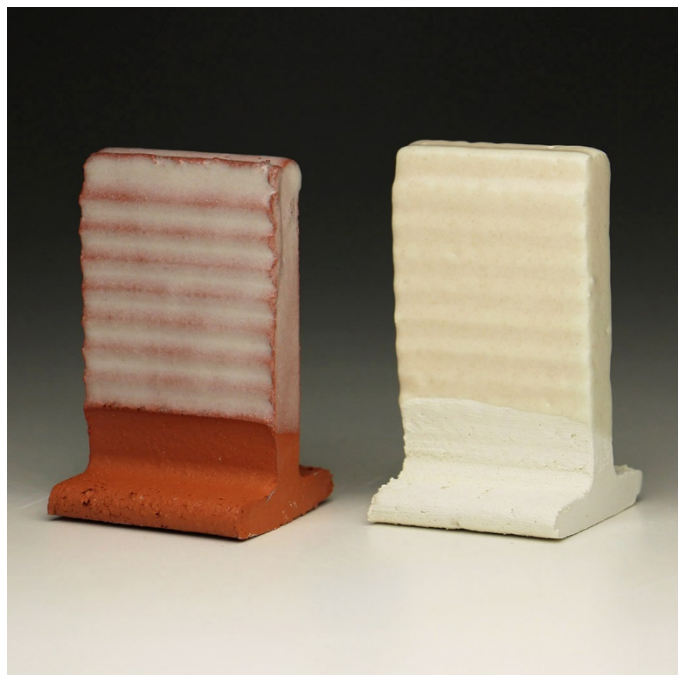
Cone 06



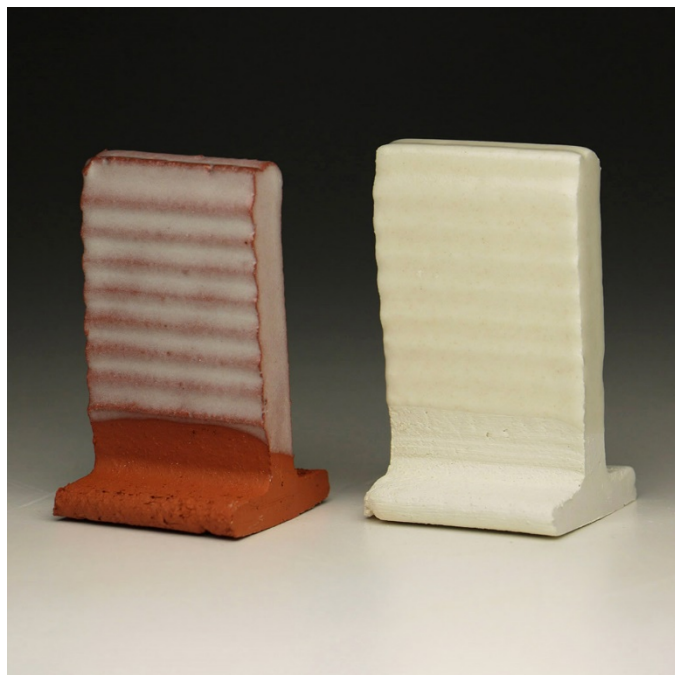
Cone 04



## Johnson Semi Matt Revised

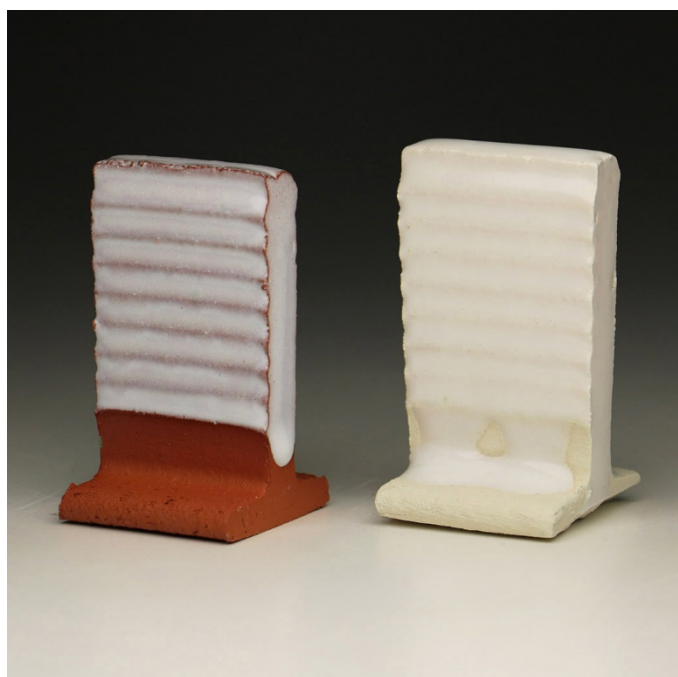


Cone 06



Cone 04

## Kansas City White Pink Glaze



Cone 06



Cone 04

# Lichen



Cone 06



Cone 04

# M.J. Base



Cone 06



Cone 04



## Opaque Smooth Mat



Cone 06



Cone 04

## Otto's Texture revised 5/90



Cone 06



Cone 04



## Stratton Grueby



Cone 06



Cone 04

## V.C. 5000

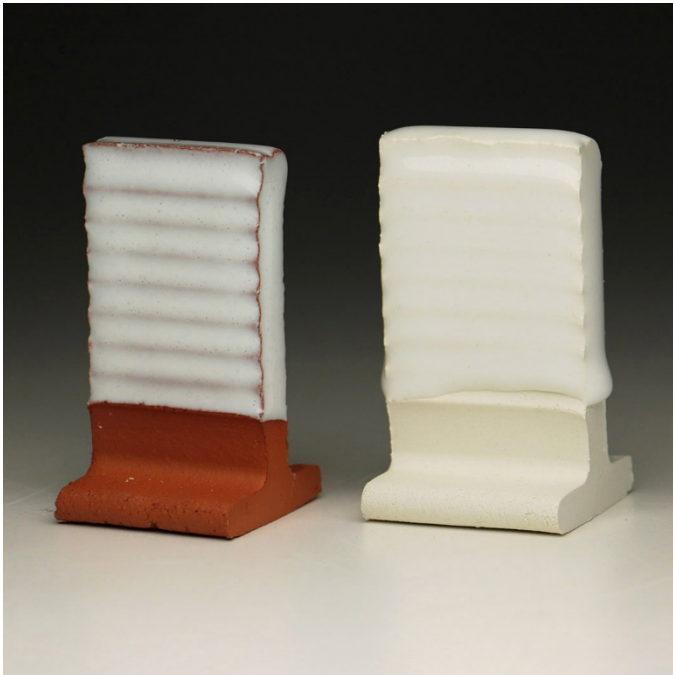


Cone 06



Cone 04

## V.C. Majolica



Cone 06



Cone 04

## V.C. Satin Majolica



Cone 06



Cone 04

## V.C. Opaque Satin



Cone 06



Cone 04

## V.C. Satin Stone



Cone 06



Cone 04



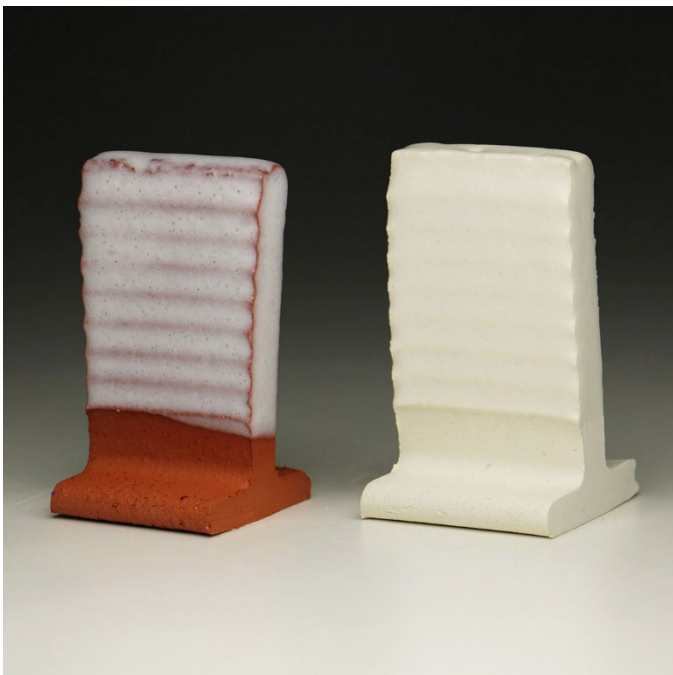
## V.C. Opaque Gloss Glaze



Cone 06

Cone 04

## V.C. Transparent Satin



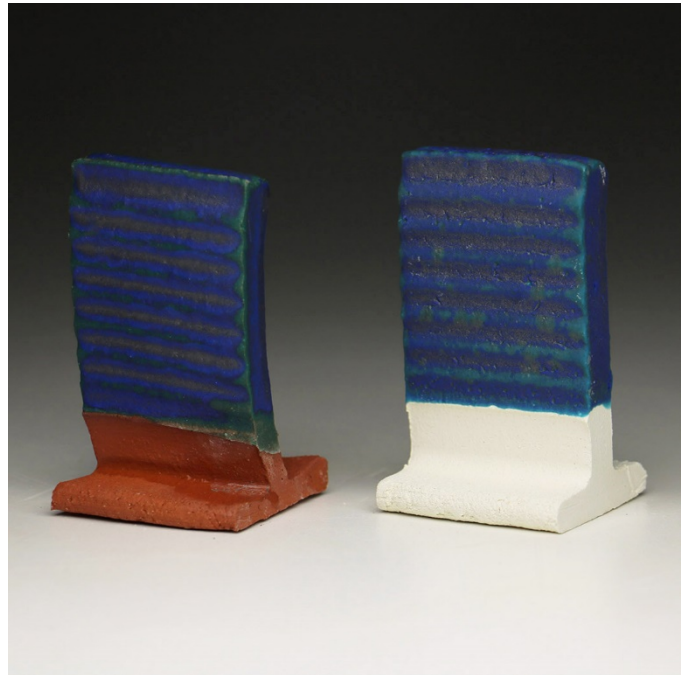
Cone 06

Cone 04

## Varda's Blue Green



Cone 06



Cone 04